

Leeds

Urgent treatment centres

Open every day from 8am – 11pm
(including bank holidays and Christmas Day)

Your new service to help you
and your loved ones when
you need medical help but it's
not an emergency.



St George's Urgent Treatment Centre, St George's Centre,
St George's Road, Middleton,
LS10 4UZ

Wharfedale Urgent Treatment Centre, Wharfedale
Hospital, Newall Carr Road,
Otley, LS21 2LY

Right care | right time | right place

If you have an **urgent injury or illness** that is not life or limb threatening, then an urgent treatment centre can provide assessment, advice and/or treatment.

Common conditions that can be treated at an urgent treatment centre are:

- Cuts and grazes
- Sprains and strains
- Simple broken bones
(if your bone is sticking out or there's a serious wound, then this should be seen at A&E)
- Wound and wound infections
- Minor burns and scalds
- Minor head injuries
- Insect and animal bites
- Minor eye injuries
- Minor back injuries
- Emergency contraception
- Skin infections/rashes/allergic reactions
- Urine infections
- Raised temperature/fever

What else is on offer at an urgent treatment centre?

- **X-ray facilities** are available on site every day until 8.30pm. One of our healthcare professionals will advise you if we're able to offer you an x-ray depending on the nature of your injury or illness
- The centre can also, if appropriate, offer **urine tests**
- **Minor illness service** (for example sore throats or coughs and colds) runs from 8am-6pm, seven days a week led by skilled nurses
- **Prescriptions** for minor illnesses are only issued through the minor illness service as described above

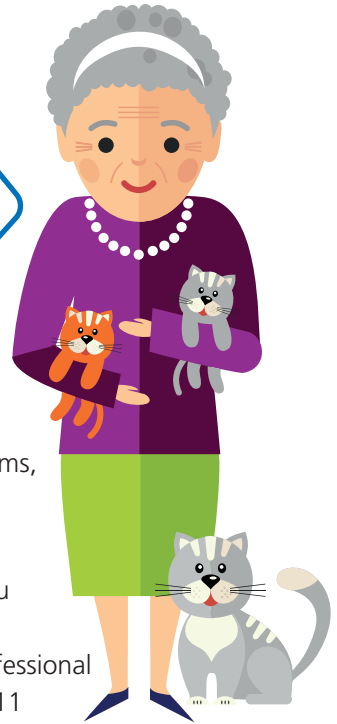
Depending on your symptoms, an urgent treatment centre is able to:

- Carry out blood tests and x-rays to get a better understanding of what is wrong with you
- Prescribe medication and issue prescriptions for some conditions

Please note we do not treat people aged under two years old or those aged over 65 who have a head injury. In addition we do not treat people with pregnancy related health conditions.

We know convenience matters to you so here's **how you can access** the urgent treatment centre.

TALK BEFORE
YOU **WALK**
CONTACT NHS 111



We always recommend you **contacting NHS 111**. Where appropriate, a fully trained advisor will assess your symptoms, decide what medical help you need and advise where you need to go.

NHS 111 advisors can also arrange an appointment for you at an urgent treatment centre, or an out of hours GP if your condition means you need to see a health care professional within the next 12 hours. If you prefer you can use NHS 111 online rather than calling the service <https://111.nhs.uk/>

By using NHS 111 we may be able to pre-book an appointment which is more convenient than walking-in and waiting to be seen.

If you have difficulties communicating or hearing, you can call 18001 111 on a textphone. Or you can use the NHS 111 British Sign Language (BSL) interpreter service if you're deaf and want to use the phone service: <https://interpreternow.co.uk/nhs111>

If you want, you can choose to walk-in to an urgent treatment centre with no appointment needed beforehand.

Please note like any healthcare service you may experience a delay as our healthcare staff may need to spend longer with someone who needs their care.

Do you need more copies of this leaflet?

If you work or volunteer for a community group and would like more copies of this leaflet to share with your network please get in touch with us:

Leedsccg.comms@nhs.net or call us on **0113 84 35470**

Alternative formats

An electronic version of this survey is available on our website at:

www.leedsccg.nhs.uk

If you need this information in another language or format please contact us by telephone: 0113 84 35470 or by email: leedsccg.comms@nhs.net

'Jeśli w celu zrozumienia tych informacji potrzebuje Pan(i) pomocy w innym języku lub innej formie, prosimy o kontakt pod numerem tel.: 0113 84 35470 lub poprzez email na adres: leedsccg.comms@nhs.net

اگر آپ کو ان معلومات کو سمجھنے کے لیے یہ کسی اور زبان یا صورت میں درکار ہوں تو برائے مہربانی سے اس نمبر پر فون کر کے رابطہ کریں: 0113 8435470 یا اس پتہ پر ای میل لکھیں:
leedsccg.comms@nhs.net

